



Sustainable Collections Project **Orange, Cabonne and Blayney**

Documenting and interpreting significant collections in Central NSW Museums

Supported with funding from Orange, Cabonne and Blayney Councils and Arts NSW



Dedicated to hundreds of museum
volunteers past and present in **Orange,**
Cabonne and **Blayney** and to the thousands
of **donors** to the museums of **Central**
NSW.

Their **generosity** and **energy** has built
collections of enduring **meaning** and **value**
for their **communities.**

The purpose of this project is to **support**
and **sustain** community **museums** and
collections for the benefit of **current** and
future generations.

Minister's Foreword

NSW has more than 500 community museums in nearly every town and village across the state. The collections tell fascinating stories about the history, cultures, people and places of NSW. Community museums make an important contribution to the cultural life of rural and regional towns and villages. They are the keepers of memories and heritage places, providers of education and tourism services, and interpreters of unique local stories.

All of this would not be possible without the dedicated work of museum volunteers. They are the backbone of local history, heritage and culture in their communities. Their work with museums and heritage creates more liveable communities with a sense of place and distinctive identity. The community museum movement is built on partnerships and community spirit. This project extends and strengthens these partnerships through effective links between the museums, councils and the NSW Government.



The Hon George Souris MP
Minister for the Arts

From the Mayors of Orange, Cabonne and Blayney

Our communities are proud of the history and heritage of the region; from ancient Wiradjuri culture to more contemporary stories built around agriculture, food, wine and gold. These stories are found in collections, museums and heritage places in the towns and villages of Central NSW.

Over the last four years the Sustainable Collections Project has been working with museum volunteers to document and interpret the collections and stories held in community museums across the region. This is a collaborative project jointly supported by the councils of Orange, Cabonne and Blayney, together with Arts NSW.

This booklet takes stock of some of the work from the Sustainable Collections Project. The project has crafted new partnerships between our councils, museums and communities. It is revealing significant objects and collections, and ensuring they are sustained for future generations. We hope the booklet and website encourages you to visit and enjoy the special museums, villages and heritage places which tell the stories of our region.

Councillor John Davis,
Mayor of Orange City

Councillor Robert Dowling,
Mayor of Cabonne Council

Councillor Bruce Kingham,
Mayor of Blayney Shire Council



Cr John Davis



Cr Robert Dowling,



Cr Bruce Kingham

Central NSW and Orange, Cabonne and Blayney



Central NSW is famed for its produce and cool climate wines. Mount Canobolas is the major landmark with an altitude of 1,395 metres, giving commanding 360 degree views of the district. The topography, soils, climate and geography of the region combine to create a rich productive landscape. Mixed farming includes orchards and vineyards around Orange, and prime lamb and wool, cereal, vegetables and beef production in the region.

The Orange, Cabonne and Blayney region is 3.5 hours drive west of Sydney. It has a combined population of around 57,000 people. Orange is the major city servicing the

surrounding towns of Blayney, Molong and Canowindra. The area has many attractive historic villages including Carcoar, Cudal, Cumnock, Eugowra, Lucknow, Lyndhurst, Mandurama, Manildra, Millthorpe, Spring Hill and Yeoval.

Industries in the region include health and rural services, gold mining, manufacturing and education. The area welcomes tourists all year round with a seasonal calendar of events. People visit the region for its food and wine, cool climate parks and gardens, historic villages, museums, galleries and mining heritage.



About the Sustainable Collections Project

The Sustainable Collections Project is a joint initiative of Orange, Blayney and Cabonne Councils, with funding support from Arts NSW. The project was initiated by Orange City Council's museum program, working with the museums in the region. It is designed to assist community museums with the documentation, assessment and interpretation of collections, and to work with councils to improve the planning and coordination of museums. It recognises that the heritage collections are important community assets that need better documentation and management to sustain their value and significance into the future.

The project employs locally based collections officers to work with volunteers to identify significant objects and distinctive stories in each museum, and improve interpretation and museum planning.

Why was this project necessary?

- › Across the region is a network of community museums, historical societies and heritage places which are managed by volunteers
- › These museums hold collections which are important community, cultural and financial assets
- › Collections need maintenance, planning and investment to sustain their value and significance
- › Museums have obligations to donors and the community to pass sustainable collections to the next generation
- › Collections and museums have been growing without sufficient regard for sustainability
- › The distinctive themes and stories in each museum are not well promoted or linked to tourism marketing
- › Many volunteer managed museums struggle to make collection management a priority along with all the other tasks and pressures involved in keeping a museum open
- › Small museums lack the resources to prepare competitive grant applications
- › Councils were not actively involved in planning for the future of their museums
- › Museums were opening without adequate planning or thinking about sustainability
- › Councils own significant objects which are not always recognised for their heritage value
- › Councils need expert advice and assistance with strategic planning for museums and collections to understand the sometimes-competing needs and priorities of their various museums
- › A number of the museums in the region are celebrating fifty or sixty years since their foundation and need investment, renewal and planning for the future
- › Museum volunteers said they wanted active hands on assistance with their collections, not just advice

Project Foundations

The Sustainable Collections project was initiated by Orange City Council's Community Liaison Adviser and Museum Adviser. Council's museum program works with all the museums in the region, not just in Orange. The program supports a museum network representing all the community museums. The network meets regularly to advise on training needs, plan workshops and joint projects. Projects include collaborative exhibitions held in Orange Regional Gallery exploring common themes such as lace, water and migration heritage. The exhibitions draw on all the museum collections and sponsor new research. The *Watermarks* exhibition had satellite displays on water places and themes in museums across the region. These projects strengthened co-operation and raised the profile of the museums. This created a strong foundation for the funding case to the councils to invest in the Sustainable Collections Project.



In the *Watermarks* collaborative exhibition, traditional museum objects were reinterpreted along with the exploration of contemporary water issues.

Project Aims

- › Work with museum volunteers to research, document and assess the significance of the collections
- › Improve collection management
- › Refine distinctive themes and stories in each collection
- › Analyse the condition and needs of the museums and collections
- › Conserve significant objects
- › Identify priority projects and assist museums with funding applications
- › Liaise with Aboriginal groups and improve the documentation and interpretation of Aboriginal collections
- › Design new interpretations of distinctive stories and significant objects
- › Strengthen museum networks and links with other museum and cultural partners
- › Provide advice to councils about strategic developments and museum needs and opportunities
- › Prepare an integrated strategic plan for the region's collections and museums
- › Design a combined museums and collections web site with online educational resources about local collections, history and heritage for use by schools and tourists
- › Develop audiences and enhance community benefits from the museums and collections
- › Create more sustainable and significant collections

Project Steps

- › Consultation to build support from the museums and councils
- › Presentations and submissions to councils
- › Engage locally based collections officers to work with the museums
- › Conduct an audit to understand the current state of the collections and museums
- › Regular meetings with the museum network
- › Analyse the condition and needs of the collections and museum buildings to identify priority projects
- › Draft principles for participation and letters of agreement
- › Harness advice and assistance from the Powerhouse Museum and Museums and Galleries NSW
- › Collections officers work with museum volunteers to document and photograph objects
- › Research object files and assess the significance of important objects
- › Improve collection policies and procedures
- › Provide conservation supplies and advice
- › Identify distinctive themes and stories in the museums
- › Design new interpretive panels and upgrade displays
- › Review cultural and tourism plans to align new displays with tourism strategies
- › Work with local Aboriginal groups to understand the context and significance of Aboriginal collections and places
- › Design and develop a joint museum website and promotional brochure

“The project has given me the opportunity to work with volunteers and help them envisage how they can move forward in a more resilient and sustainable way”.

Margot Jolly, Project Officer

Why sustainability is important for museums

- › Sustainability has many dimensions for museums: economic, collection management, community education and energy use in museum buildings and services.
- › Museums face particular sustainability challenges with their collections. A museum manages permanent collections which are held in trust for current and future generations. Museum collections entail obligations to donors and the community. Collections cannot be sustainable if they are continually expanding, pushing the limits of museum buildings and human resources. Nor should we encourage the development of new museums without considering the needs and support for existing museums.
- › One of the sustainability issues for museums is to ensure we leave significant collections in good order, as an asset not a liability for future generations. Among other things, sustainable collections mean that our collecting legacy to the future is not so large that it prevents the next generation developing collections about their time, place and culture.



Collections project officer Margot Jolly with Alison Russell, Orange City Council's Community Liaison Officer, outside the headquarters of Orange and District Historical Society. The core of the project work was undertaken by three locally based collections officers with museum experience. They worked side by side with museum volunteers to research and document significant objects and collections.

What the museum audit revealed

An audit of the museums and collections was one of the first steps in planning the project and understanding the needs of the museums and collections. Among many issues the audit revealed:

- › Less than 20% of the collections across the region were catalogued
- › Some collections had no documentation at all
- › Collections are mostly unprovenanced
- › Only three museums had collection and deaccessioning policies
- › Volunteers are aging: 45% of volunteers are over 70 and only 4% are under 45
- › There are not enough volunteers to make up the backlog of collection registration or sustain museum operations
- › Some of the heritage buildings were in poor condition; one museum had closed after its ceilings collapsed
- › Many museums offer poor amenities to make volunteering comfortable or attractive
- › Many museums had no collection working space
- › Most museums lacked phone and internet connections
- › Most museums are operating on tiny budgets raised from admissions and membership fees
- › Most lack the funds to invest in their collections, exhibitions and buildings
- › Many museums do not have the space and resources to change and update displays
- › In some museums limited opening hours restrict visitor access and services to tourists
- › There are substantial numbers of objects in poor condition, incomplete, and lacking a provenance or story relevant to the district, meaning over time the museums need a careful program of deaccessioning

Partners and Participants

- › Orange Regional Gallery
- › Orange City Library - Central West Libraries
- › Orange Local Aboriginal Land Council
- › Bloomfield Campus, Orange Hospital, Central Western Area Health Service
- › Orange Botanic Gardens
- › Orange and District Historical Society
- › Marsden Memorial Rural History Research Centre
- › Canowindra Historical Society and Museum Inc.
- › Molong Historical Society and Museum Inc.
- › Eugowra Historical Museum and Bushranger Centre
- › Yeoval Historical Society and Museum
- › Cabonne Food and Wine Cultural Centre, Cudal
- › Age of Fishes Museum Inc, Canowindra
- › Golden Memories Museum, Millthorpe
- › Blayney Family History Group
- › Viv Kable Collection, Blayney
- › Carcoar Court House
- › Stoke Stable, Carcoar
- › Carcoar Hospital Museum
- › Carmanhurst Room, Carcoar
- › Carcoar and District Historical Society



Volunteers from the Cabonne region were invited to attend a project briefing meeting in Molong.

Associated projects and initiatives

- › Repairs and conservation to the fabric of the historic Molong Museum, funded through the Federal Government's Jobs Fund Stimulus package
- › A commissioned history of Wiradjuri life in the region, people and places, pre and post contact
- › Strategic plan for the historic Carcoar Hospital
- › Conservation assessment of Stoke Stable, Carcoar
- › Australian Dress Register Workshops with the Powerhouse Museum
- › Research and interpretation of the historic Wentworth Main Shaft Mine at Lucknow
- › Orange Blossoms collaborative exhibition in Orange Regional Gallery on the garden history and culture of the region, including documenting significant collections, website and public programs
- › Conservation of the 1864 map of Wellwood
- › Contribute to the Mary Turner Collection catalogue with Orange Regional Gallery
- › Document and research community collections for an exhibition on migration heritage, together with publication of *Half a World Away*, and a website and heritage trail
- › Partnership with the Migration Heritage Centre NSW to develop the Fairbridge Farm School Exhibition at Molong Museum



Opening of the Carcoar Hospital Museum and funding of a workshop on medical collections.

Guidelines for Assistance

As well as working with museum volunteers on collection documentation, the project supported requests for design, conservation and exhibition assistance. Requests were considered against criteria including:

- › Relevance to the project's aims
- › Interpreting significant objects and distinctive stories
- › Good practice in planning, sustainability and collection management
- › Equity across the council areas and museums
- › Conservation of significant objects and heritage places
- › Safe and accessible museum environments
- › Responding to critical needs
- › Developing audiences



The project was able to assist the Carcoar Hospital Museum with interpretative panels on the history of the hospital for its official opening in April 2011.

Orange: people, places, objects and stories

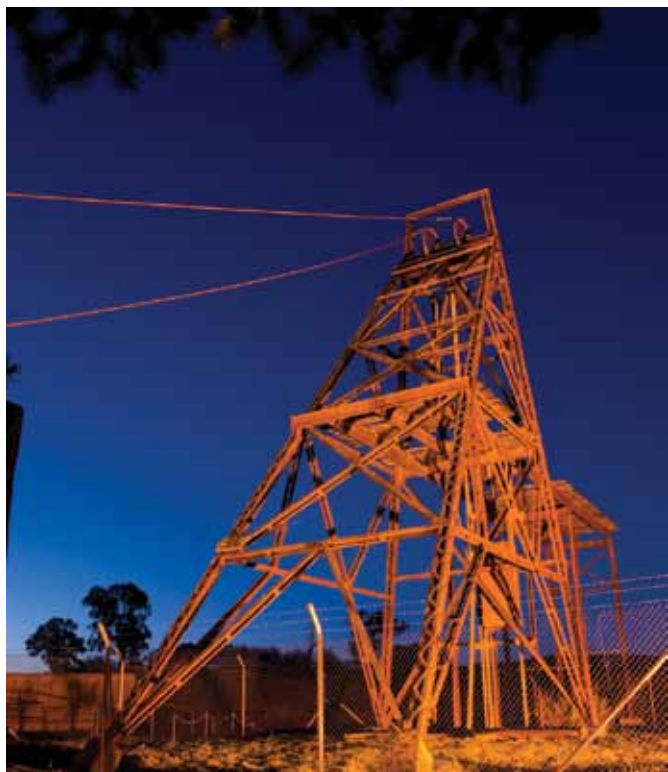
Orange is a thriving regional city with about 39,000 residents. It is well known for its heritage parks and gardens which create a spectacular show in autumn. The city promotes itself as Australia's Colour City and has built its tourism profile around food and wine and fruitful landscapes.

The first people of the region are the Wiradjuri people. Their descendants still live in the region and continue to care for the land, working with partners to protect and interpret significant places and collections. European settlement dates from around 1823 at what was then known as Blackman's Swamp. The area was named Orange by Major Thomas Mitchell in 1846 in honour of Prince William of Orange. With the first official discovery of gold was at nearby Ophir in 1851, Orange prospered as a trading, transport and agricultural centre. Health, education, retail, rural and mining services are part of the modern city's infrastructure.



Among the significant objects documented in the project is this historic nugget found by William Tom and John Lister at Ophir in 1851, and associated with the public discovery of the first payable gold in Australia. This discovery marked the beginning of the Australian gold rushes and brought tremendous changes in the development of the region and in the economic and social fabric of the nation.

Image courtesy Orange and District Historical Society



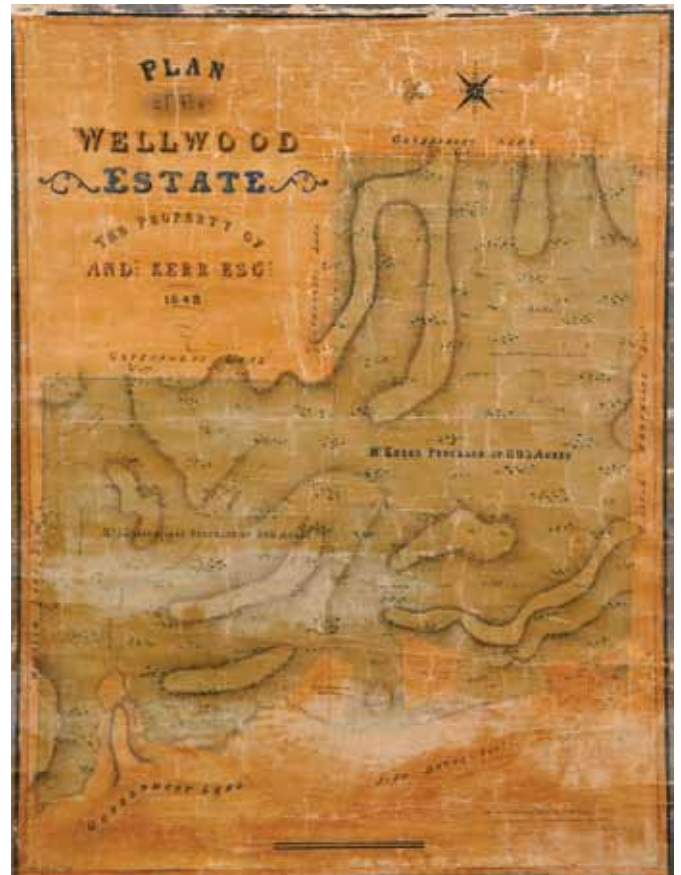
The distinctive poppet head of Wentworth Mine at Lucknow; interpretation of this significant site is currently being developed for schools and tourists discovering the gold history of the region.



G. F. Angas, Gold Washing Fitz Roy Bar Ophir Diggings, 1851: hand tinted lithograph, Orange and District Historical Society. The Society owns two lithographs from a series of six views of the diggings at Ophir. The lithographs are a significant pictorial record of the earliest days of Australia's first gold field at Ophir and capture in fine detail the chaos and energy of a working gold field.



Display on the medical history of the Orange district in the foyer of the new Orange General Hospital; the project worked with medical interest groups to interpret the history of medical and mental health services and document related collections.



Map of Andrew Kerr's property 'Wellwood', 1864, shows the original 'Wellwood' homestead, garden, contours, Summer Hill Creek and surrounding woodland extending to the Bush Inn paddock and blacksmith's shop. This area is part of the Fredericks Valley settlement from the 1820s. The project supported conservation of the map and other items in the Wellwood collection.

Gift of Charles Sturt University to Orange City Council



Lake Canobolas Pump House interpretive panels. The project assisted with interpretation of the historic Hornsby engine and pumping machinery still in situ in the pump house at Lake Canobolas. A conservation management plan will be undertaken in 2012.

Being part of this project has helped us to look outside our own collection to see the whole region and connections across collections. Central NSW Museums is a network like friends and family.

Orange and District Historical Society

Cabonne: people, places, objects and stories

Cabonne is an Aboriginal word meaning 'large'. Wiradjuri people are still living in the area, caring for sites and country. European settlement dates from the 1820s, with the township of Molong established in 1835. Traceries of creeks and rivers support rich agricultural land and a network of historic towns and villages. Rural enterprises include sheep, wool and cattle, grains, orchards and viticulture. Lucerne grows on the rich flats of the Belubula River around Canowindra.

The area has many conservation areas, reserves and heritage places, including the historic gold mining site of Ophir where the first payable gold was discovered in 1851. Other significant places drawing visitors to the region include Yuranigh's grave, near Molong. It is still marked according to Aboriginal custom with carved trees, to which Thomas Mitchell added a headstone in 1850, honouring his "guide, companion, counsellor and friend".



Volunteers at the Eugowra Historical Museum and Bushranger Centre, where the project is working with the museum on the interpretation of the area's notorious bushrangers.



The Amusu Theatre in Manildra, built in 1936, is one of Australia's oldest operating picture theatres with a rich collection of movable heritage and memorabilia.



Eugowra's famous Escort Rock was the scene of a large gold escort robbery in 1862, when Frank Gardiner and Ben Hall held up a coach carrying £14,000 of gold and cash, of which only a portion was later recovered.



One of the important stories in the Molong Museum is about child migration to Fairbridge Farm at Molong. The project is working with the museum on a new exhibition of this significant collection, with assistance from the NSW Migration Heritage Centre.



The project gave us wheels and steered us in the right direction. We've had support and learnt new skills. We really appreciate the hands on assistance with all the work of relocating displays and collections.

Marie Hammond, President Molong Historical Society and Museum



Breast plate presented to King Joe, by Thomas Icely, Bangaroo Station 1844, Canowindra Historical Society. The breast plate was found under a shed at Burnt Yards near Carcoar and was purchased at auction by families connected with the Society.



Lucerne, Canowindra's 'green gold', grows on the flats of the Belubula River. The project is working with the Canowindra Historical Society to interpret this distinctive local story.

Blayney: people, places, objects and stories

Blayney Shire, with a population of 6,000 people, is 250 kilometres west of Sydney, adjoining the Cabonne and Orange City Council in the north. Mining and farming are the mainstays of the economy including sheep and cattle, crops, orchards and viticulture.

The original inhabitants of the Blayney area were the Wiradjuri Aboriginal people. European settlement dates from the 1820s when government stock stations were set up and pastoralists moved onto the land. The villages of Blayney and Carcoar were established in the 1830s. The region prospered with the gold rush of the 1850s and 1860s. With gold came bushrangers, including the notorious Ben Hall and John Gilbert, John O'Meally, John Vane and Mickey Bourke. They were active throughout the district, staging hold-ups along the roads to Carcoar. The region is home to charming historic villages which are known for their heritage buildings, gardens, museums and food and wine.



Streetscape view of Blayney houses.

The historic Carcoar Court House opened in 1882, The building consists of a clock tower, which the clock was never added. The Court House ceased as a Court of Petty Sessions in the 1940's, and was subsequently decommissioned. In 1994, The Carcoar and District Historical Society Inc. was appointed manager of the Carcoar Historic Reserve Trust by the New South Wales Government.



The interior of the historic Carcoar Court House designed by James Barnett and now a museum. When the Court House was closed the community campaigned to keep the original furniture and fittings intact. The project helped with interpretive panels and AV equipment for use in school programs.



At Millthorpe's Golden Memories Museum a new exhibition was created around the significant pea harvesting machinery, linking rural technology to visitors' interests in food and produce.

The Sustainable Collections Project has allowed us to present the museum exhibitions at a high standard for visitors to the museum. It's amazing how many visitors comment on the quality of displays.

Trevor Pascoe, President Millthorpe and District Historical Society and Golden Memories Museum.



Carcoar Hospital Museum volunteers, Margaret Hahn, Rhonda Bloomfield and Jill Cole at the opening of the museum. The project helped the museum prepare a strategic plan and interpretation.



Millthorpe's Golden Memories Museum has a significant collection of rural machinery which is well provenanced to the district. This 1911 Clayton and Shuttleworth steam traction engine was used to power a stamper battery, also in the Millthorpe collection, and for land clearing, chaff cutting and forestry.



The Carcoar Hospital Museum completed in 1861 and designed by Colonial Architect Edward Gell.

Some Outcomes and Achievements

Secured funding of around \$280,000 to employ collections officers and support museum projects and collections.

This is funding which wouldn't have been accessed without the project and network of museums working together.



Local artist Christine Whitty working on a mural at the Age of Fishes Museum in Canowindra. The evocative underwater world is the setting for the museum's new Water to Land exhibition. Among other benefits the project uses local skills and supports creative industries in the region.

Image courtesy Age Of Fishes Museum



The Age of Fishes Museum, Canowindra exhibits a chance discovery made in 1956 of thousands of long-extinct fossil fishes from the Devonian period. The museum has a shop and is an accredited Visitor Information Centre.

Over 5,000 objects registered, catalogued and photographed

More than 4000 volunteer hours worked on collection management

Council-owned heritage objects documented

Workshops and in house-museum training on all aspects of collection management

Training and new editions of Collections Mosaic Plus

Up to date collection policies and procedures

Statements of significance for the most important objects

Collections and stories linked to tourism marketing such as food and gardens

Direct assistance to individual museums for improvements such as showcases, internet connections, AV equipment, wire mannequins, conservation materials, ergonomic furniture and fit out of collection working spaces

Assistance with grant applications and acquittals

Supporting creative industries in the region

Linkages and synergies between museums, libraries, galleries, heritage places and tourism partners

Assistance with the design and development of exhibitions and interpretive panels

Carcoar Hospital Museum strategic plan and interpretive panels

Golden Memories Museum Pea Harvesting exhibition including panels and video

Golden Memories Museum, Good Templar's Hall interpretation

Lake Canobolas Pump House exhibition

Blayney Family History Group banners

Canowindra Historical Society, Green Gold Lucerne interpretative panels

Carcoar Court House interpretative panels

Winner of 2011 Museums and Galleries National Award - Medium Museum for Sustainability

Some benefits for participating museums

Assistance with collection research, documentation and significance assessment

Assistance to put collection records on Mosaic and online

Statements of significance for key objects prepared with museum volunteers

A strengthened relationship with councils, leading to improved support and assistance

Updated policies and plans

Access to funds for conservation and museum projects

Design and production of interpretive panels and exhibitions

Education resources that can be used in each museum for school visits (in development)

Participate in collaborative projects such as exhibitions and public and education programs

Greater community awareness of the significance of the collections

A strong museum network providing mutual assistance and advice

Enhanced linkages with libraries, cultural and tourism structures

Participation in collaborative projects such as exhibitions

Planning for a sustainable future for the museums

A shared museum and collections website and promotional brochure

The Sustainable Collections Project for me has been a way for museums to come out of the old and into new ways of displaying objects and telling the stories.

Where to next?

Julie Sykes, Orange and District Historical Society

Commission a flexible education kit for use in all the museums, with content linked to curriculum outcomes

Continue to build on the website about museums, collections and heritage places

Continue work on the collections and advise on careful deaccessioning

Secure funding for a full time regional museum officer to continue with direct assistance to the museums and collections

A regional museum in Orange as the base for the Sustainable Collections Project and further collaborations

A collaborative exhibition about the historic villages of the region

Research and an exhibition about Cornish and Welsh settlers

A regional strategic plan for the museums and collections

Partnership with Greater Western Area Health to document hospital collections and heritage

Partnership with the RSL to document significant war collections in the region

Partnership with Orange Local Aboriginal Land Council to document Aboriginal places, collections and stories

Funding contribution to the master plan for Golden Memories Museum

Bushranging interpretative panels at Eugowra Museum

Thank you to participants, partners and supporters

Funding Partners

Orange City Council
Blayney Shire Council
Cabonne Council
Arts NSW
Museums and Galleries NSW
Power House Museum,
Migration Heritage Centre
Greater Western Area Health Service

Project Manager and Co-ordinator

Alison Russell

Museum Advisers

Kylie Winkworth
Richard Wesley
Kirsten Davies

Collections Officers

Anne Vincent
Kim Touvenin, OzArk Environmental and Heritage Management
Margot Jolly

Council Supporters

Heather Nicholls
Gretchen Armitage
Jan Richards
Vicky Prestwidge
Allan Sisley
Brenda Gray
Gerard Aguila
Lorraine Davis
Cr Geoff Braddon
Graham Fleming
Cr Kevin Duffy
Cr John Farr
Stephen Sykes
John Boyd
Wayne Davis
Anton Franze

Museum partners and volunteers

John Austin
Dorothy Balcombe
Jean Bennett
Ruth Biggrig
Neil and Dorothy Blake
Beryl Blatch
Rhonda Bloomfield
Gillian Blowes
Elaine Cheney
Jean Clements
Jill Cole
Ella Edwards
Robert Ellis
John and Audrey Farley
Fiona Ferguson
Marion Gosper
Des Green
Elizabeth Griffin
Brian and Cathy Griffith
Kerry Guerin
Margaret Hahn
Marie Hammond
Jan Harrison
Rhonda Jones
Elaine Kaldy
Maureen Kirkwood
Ken Latham
Hayley Lavers
Kate Malloy Armitt
Connie Mattocks
Sue Milne
Gwenda Munroe
Trevor Pascoe
Joyce Pascoe
Wal Pilz
Carl Purcell
Alex Rezko
Judy Smith
Rozzi Smith
Phil Stevenson
Des Sullivan
Julie Sykes
Marilyn Tobin
Myrna Tremain
Roy and Val Tranter
Peter Whiley
Ross Maroney
... and many more supporters and participants inadvertently omitted

Expert Support

Megan Hicks, advice on medical museums
Dinah Fisher, exhibition designer
Karen Coote, conservator
Rebecca Pinchin, Kate Chidlow, Brad Baker and Lindie Ward from the Powerhouse Museum
John Peterson, Migration Heritage Centre, Powerhouse Museum
Sarah-Jane Rennie, Museums and Galleries NSW
Collections Mosaic
Kira Brown and Sauce Design, web and graphic design
Neil Skinner, photographer
Alf Manciangli, Gecko Photographics
The Sticker Shop, Orange, production of interpretive panels



None of us were users of computers. With the project's support we began using digital cameras and computers, and were able to document and file things more easily.

Phil Stevenson, Orange and District Historical Society

To find out more - contact us, check out our projects, visit Orange, Cabonne and Blayney

Check out our projects and museums

Find out more about some of our museum and heritage projects and cultural sites and places in the region

Visit the Central NSW Museums website
www.centralnswmuseums.com.au

Orange Blossoms, the cultural history of gardens in Orange and district
www.orangeblossoms.com.au

Half a World Away, post war migration to the Orange district 1945-1965
www.halfaworldaway.com.au

Watermarks, reflections on the water history and culture of Orange and district
www.watermarks.com.au

Sporting Hall of Fame on line archive
www.orange.nsw.gov.au

Survey of Significant Landscape Features
www.orangesignificantscapes.com.au

Orange Regional Gallery
www.org.nsw.gov.au

Central West Libraries
www.cwl.nsw.gov.au

Age of Fishes Museum, Canowindra
www.ageoffishes.org.au

Visit our region

Visit Orange
www.visitorange.com.au

Explore Cabonne at the Cabonne Food, Wine and Cultural centre, Cudal
www.cabonnecountry.com

Explore Blayney's heritage villages
www.blayneynsw.com.au

Discover Millthorpe village and the Golden Memories Museum
www.millthorpevillage.com.au/heritage

Visit Canowindra
www.tastecanowindra.com.au/
www.canowindra.org/index.html

Orange City Council
www.orange.nsw.gov.au

Cabonne Council
www.cabonne.nsw.gov.au

Blayney Shire Council
www.blayney.nsw.gov.au

For more information about this project contact:
Alison Russell
Community Liaison Adviser
Orange City Council
arusell@orange.nsw.gov.au
02 63938170

Booklet prepared by Alison Russell and Kylie Winkworth
Booklet and website designed by Sauce Design
www.saucedesign.com.au



Discover the villages and localities of central nsw

Lucknow

Spring Hill

Huntley

March

Shadforth

Spring Terrace

Cook Park

Browns Creek

Burnt Yards

Cadia

Carcoar

Errowanbang

Forest Reefs

Four Mile Creek

Garland

Hobbys Yards

Lyndhurst

Mandurama

Millthorpe

Moorilda

Neville

Newbridge

Amaroo

Baldry

Belgravia

Boomey

Boree

Borenore

Byng

Canowindra

Cargo

Cheesemans Creek

Clergate

Cudal

Cumnock

Emu Swamp

Eugowra

Guyong

Kangaroobie

Larras Lee

Lewis Ponds

Lidster

Mandagery

Manildra

March

Molong

Mullion Creek

Nashdale

Ophir

Toogong

Yeoval